

# P3A04

4S (4 bedroom ap.)

Zgrada (Building) **P3-A**

Kat (Floor) **0.K (Ground floor)**

Orijentacija (Orientation) **S-I-J (N-E-S)**

PROSTORIJA (ROOM)	NETTO POVRŠINA (NET AREA)	KOEFICIJENT (COEFFICIENT)	NETTO KORISNA POVRŠINA (NET USABLE AREA)
1 Ulaz (Entrance)	11,33 m <sup>2</sup>	1	11,33 m <sup>2</sup>
2 Stambenog prostora (Residential space)	30,22 m <sup>2</sup>	1	30,22 m <sup>2</sup>
3 Soba 1 (Room 1)	14,26 m <sup>2</sup>	1	14,26 m <sup>2</sup>
4 Soba 2 (Room 2)	12,72 m <sup>2</sup>	1	12,72 m <sup>2</sup>
5 Soba 3 (Room 3)	12,10 m <sup>2</sup>	1	12,10 m <sup>2</sup>
6 Garderoba (Cloakroom)	5,22 m <sup>2</sup>	1	5,22 m <sup>2</sup>
7 Kupaonica 1 (Bathroom 1)	4,38 m <sup>2</sup>	1	4,38 m <sup>2</sup>
8 Kupaonica 2 (Bathroom 2)	6,90 m <sup>2</sup>	1	6,90 m <sup>2</sup>
9 Izba (Service area)	2,41 m <sup>2</sup>	1	2,41 m <sup>2</sup>
+ područje građevinskih objekata (Surface of building structures)			6,24 m <sup>2</sup>
<b>Zatvoreni prostor (Closed space)</b>			<b>105,78 m<sup>2</sup></b>
10 Terasa 1 (Terrace 1)	10,44 m <sup>2</sup>	0,5	5,22 m <sup>2</sup>
11 Terasa 2 (Terrace 2)	3,82 m <sup>2</sup>	0,5	1,91 m <sup>2</sup>
12 Vrt 1 (Garden 1)	40,90 m <sup>2</sup>	0,1	4,09 m <sup>2</sup>
13 Vrt 2 (Garden 2)	47,00 m <sup>2</sup>	0,1	4,70 m <sup>2</sup>
<b>P3A04</b>	<b>201,70 m<sup>2</sup></b>		<b>121,70 m<sup>2</sup></b>
Spremište (Stock) SPR A4	2,48 m <sup>2</sup>	0,5	1,24 m <sup>2</sup>
<b>Okupno (In total)</b>	<b>204,18 m<sup>2</sup></b>		<b>122,94 m<sup>2</sup></b>

developed by

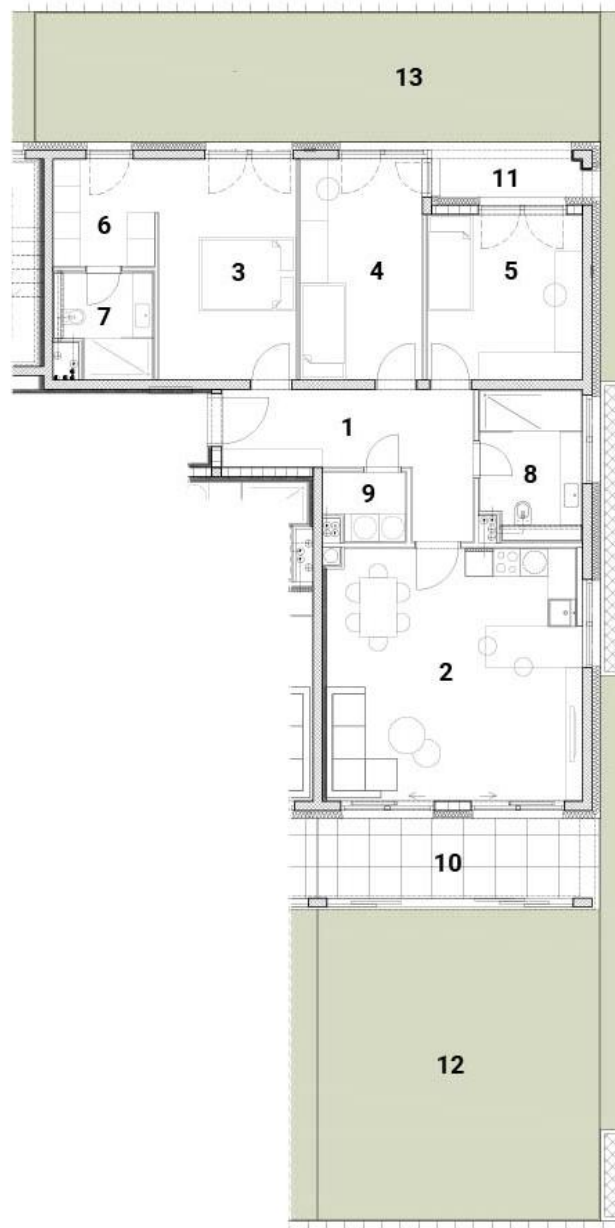
**DOMOPLAN**

[www.domoplan.eu](http://www.domoplan.eu)

exclusive agent

**Pro grupa**

+385 91 6444 158 | [ardea@progrupa.hr](mailto:ardea@progrupa.hr)



P3-A



0.K (Ground floor)



P3A04



Pribor (Accessories)

- Spremište (Stock)
- Parkirno mjesto\* (Parking space)

\*Obavezna je kupnja jednog parkirnog mjesta. Zainteresirani imaju opciju kupiti do 3 parkirna mjesta po stanu.

(Each apartment is required to purchase one parking space. If you are interested, it is possible to purchase up to 3 parking spaces per apartment.)